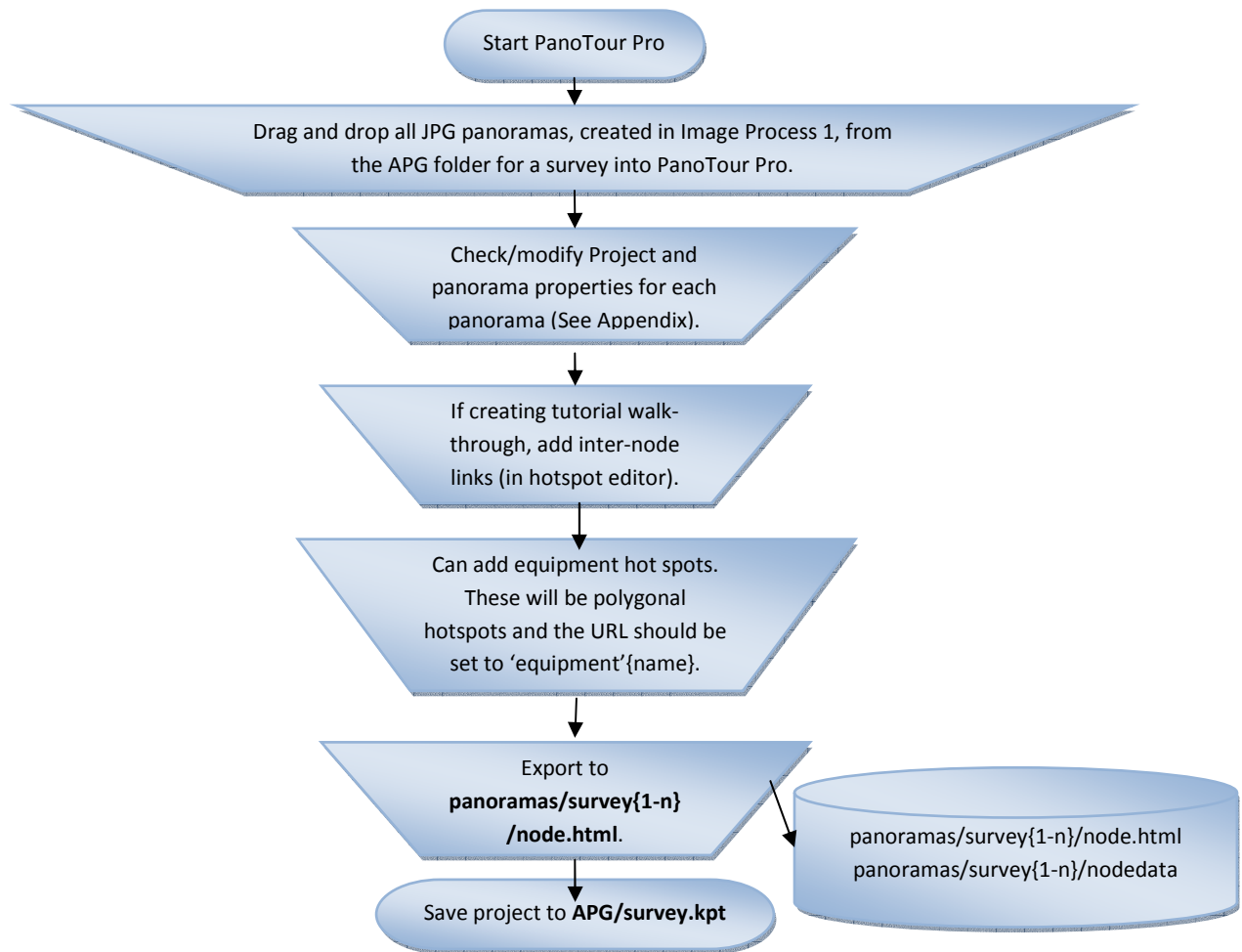


Quick Start basics: Image Processing (2)



NB:


The 4D Construction Learning Environment application has been developed around the specific data structures and script outputs from PanoTour Pro.

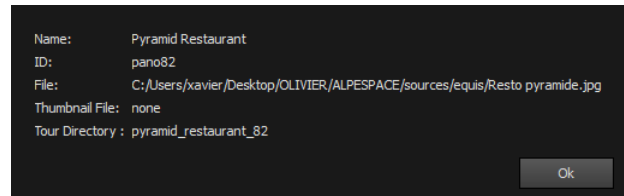
The settings shown overleaf (p2 of this Quick Start guide) are for PanoTour Pro V2.+

Appendix: PanoTour V 2.+ Settings

1. Tour Tab: Scene Properties

Name: SurveyX (where X is number of survey being processed)

Click on , change Tour Directory to: **panoramas/surveyX** (where X is number of survey being processed)



2. Tour Tab: Project Property

Name: surveyX (where X is number of survey being processed)

Ensure all items in 'Start Parameters' are unchecked



3. Build Tab

Edit Output, Target and Tiles to show:

Output/Folder:

panoramas/surveyX (where X is number of survey being processed e.g. survey1)

Filename: **node**

Target:

Uncheck 'Enable flash fallback'

Tiles: 'Jpeg quality' = **12**

