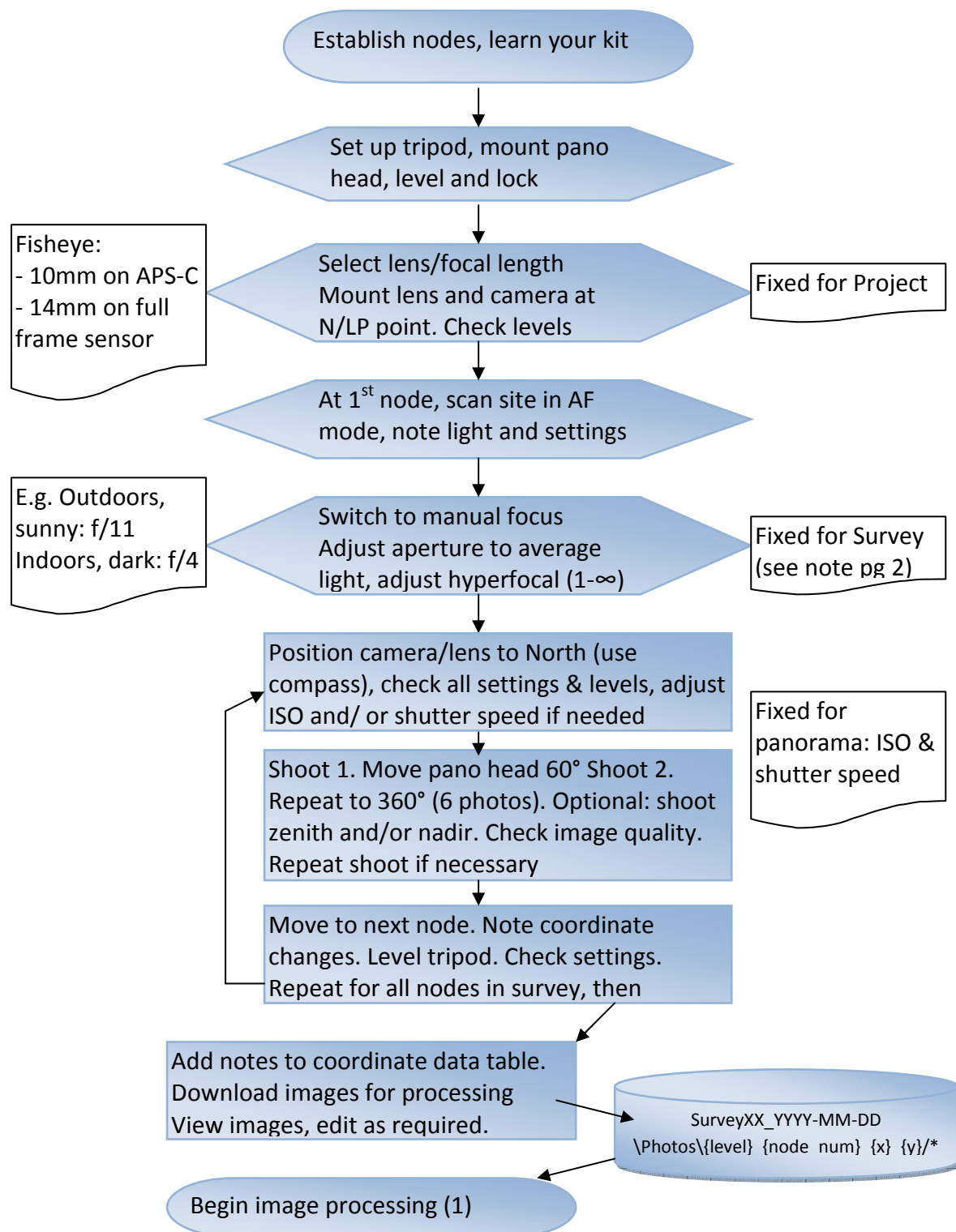


Quick Start basics: Photography for 4D virtual tour



Appendix: Settings

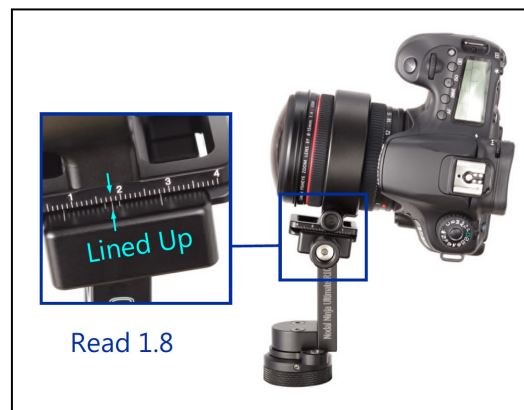
1. Set Lens to **Manual Focus** and select focal length (this is fixed for project and will need to have been established during preliminary testing at the site)

- On crop-frame sensor with full format Fisheye
 - 10mm most likely suitable for 6-7 shots
- On Full frame sensor with full format Fisheye
 - 14mm most likely suitable for 6-7 shots
 - 8mm for 4 shots, no zenith

2. Position lens and camera so that the entrance point of the lens is above axis of rotator to achieve No/Least Parallax Point (NPP/LPP) for lens rotation at selected focal length.

NPP/LPP position will change if adding tilt.

The illustration shows LLP rail position for Canon Fisheye set at 8mm for 4 shots on FF camera, mounted on fixed ring Nodal Ninja (R1) with tilt



3. Evaluate average exposure across site (e.g. take test shots and check exposure histograms or in Live View press Info for histogram)

- Select average aperture (e.g. f11 on fairly sunny day) for whole (node) panorama
- Set Mode to Aperture Priority
- Adjust hyperfocal (in 1- ∞ range)
- If shooting in JPEG format, deactivate Auto White Balance, select appropriate white balance from menu for the node
- Turn Auto ISO off.
- Adjust shutter speed (at slow speeds use remote/clicker) and/or ISO (lower levels create less noise) if necessary

4. Start with camera pointed North, take the pre-determined number of shots, using click stops on rotator to move between shots for 360° coverage.